

SPICE-CT: Image Quality Analysis Software for CT

John Loveland

Where are we now?

Software currently in use (logos scaled by percentage of survey users)



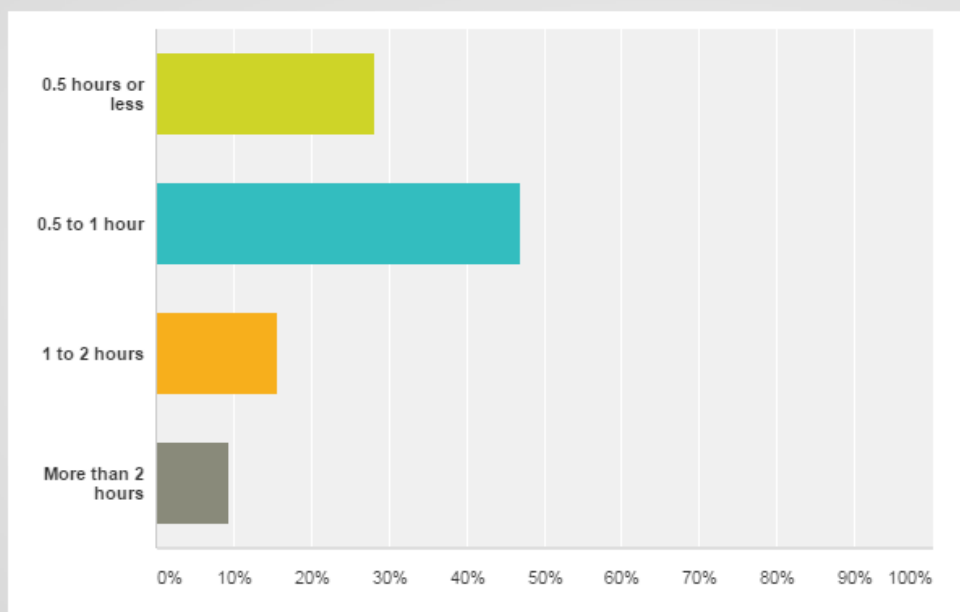
About 50% use IQworks and 70% use ImageJ but almost all currently have to use more than one software tool.

Nearly 1/3 of respondents use...

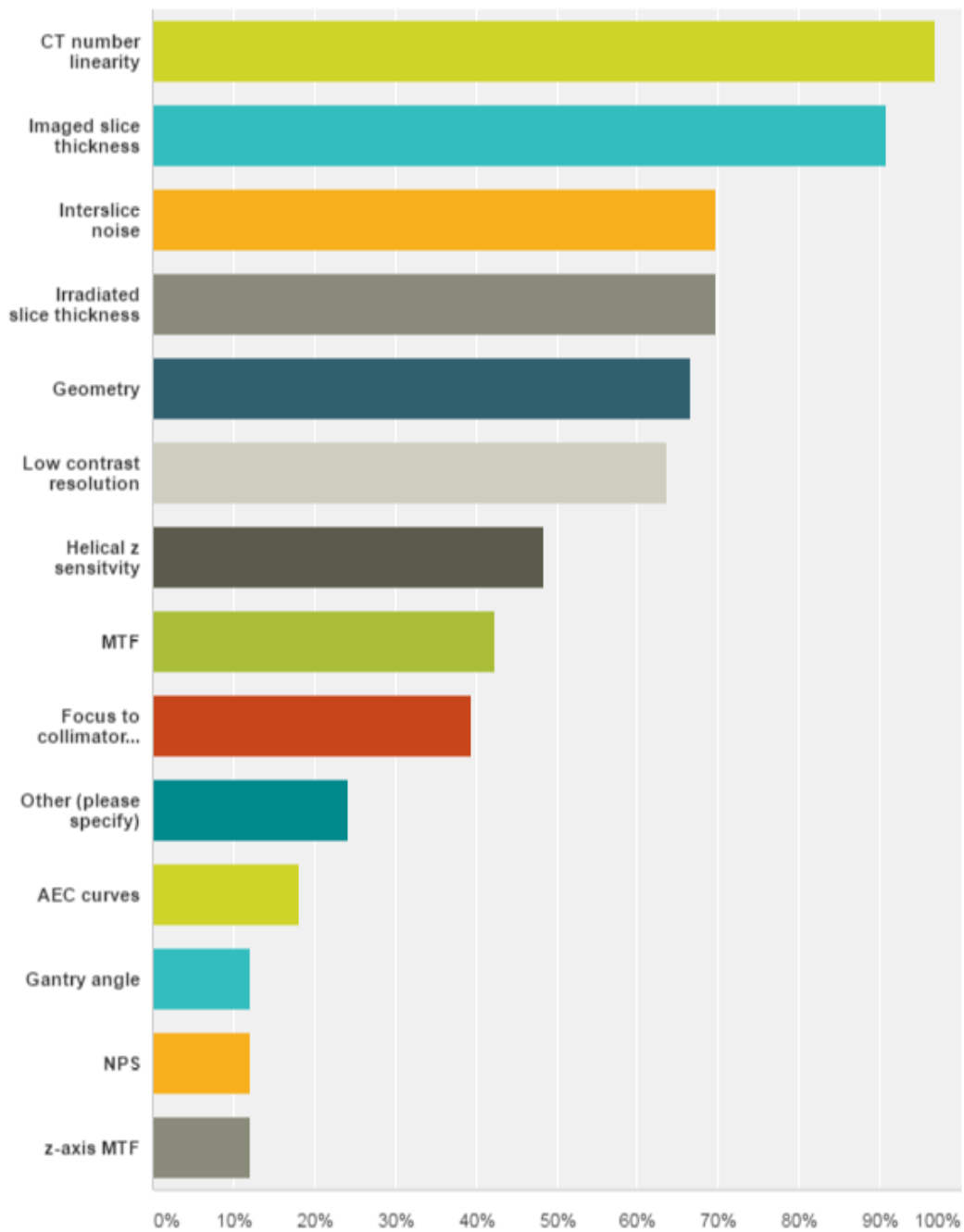
No analysis software



Analysis time

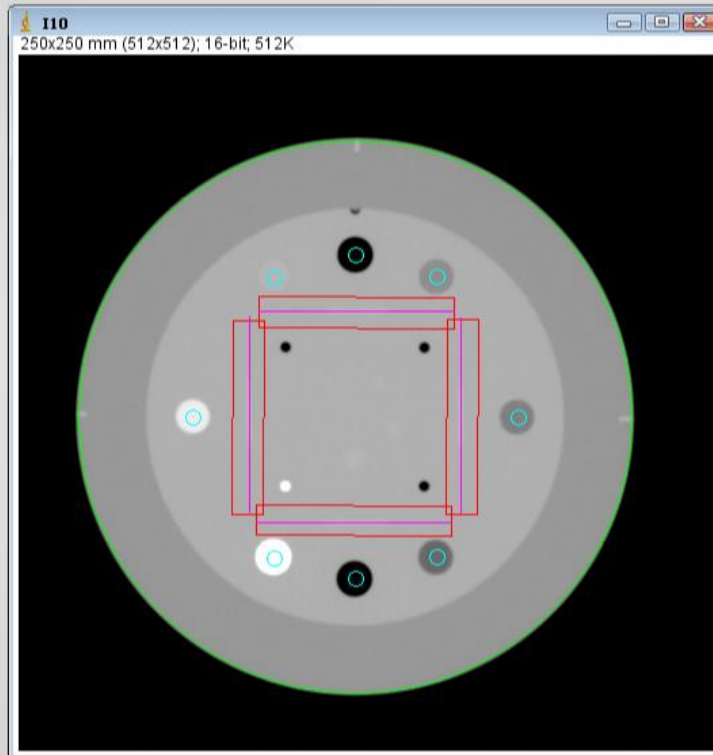


Analysis types



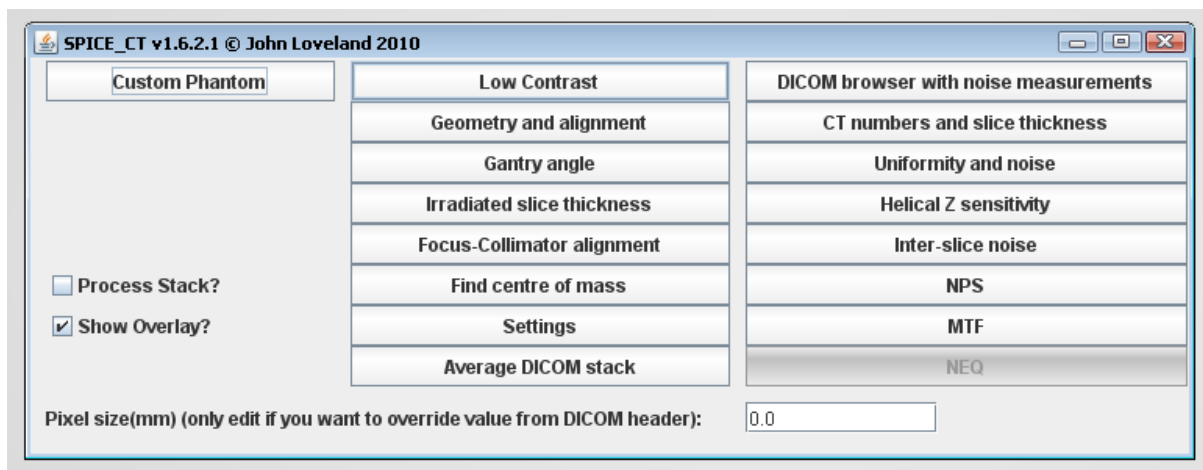
No single test that ALL respondents do!

SPICE-CT

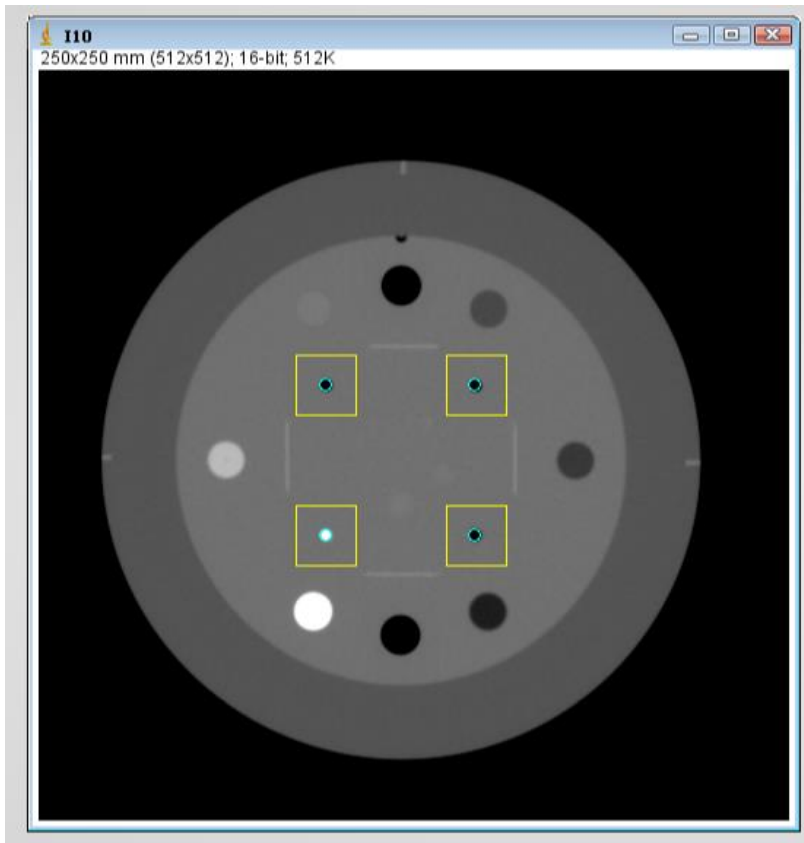


CT numbers and slice thickness

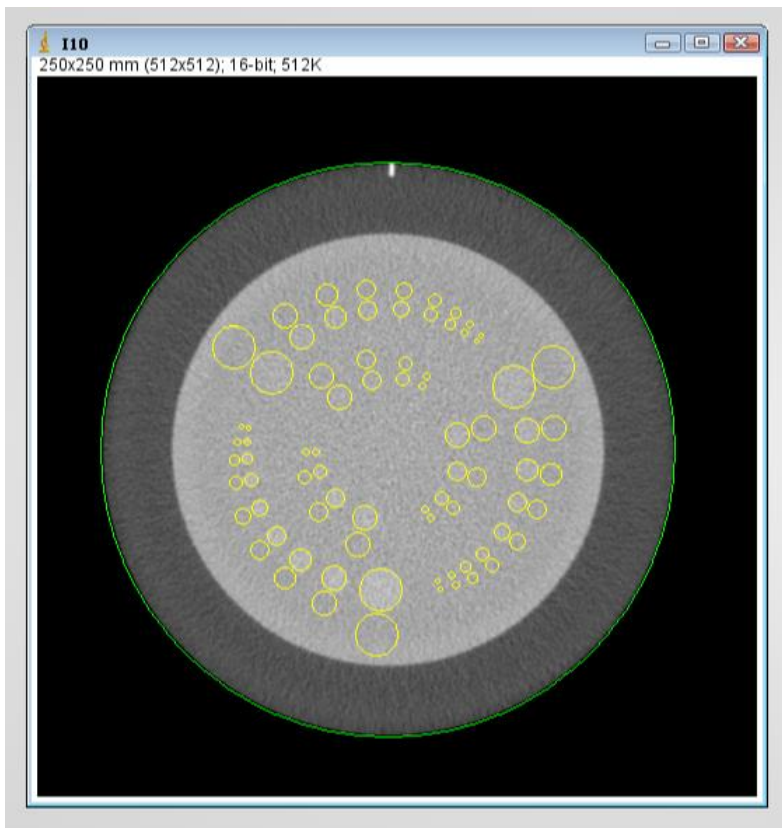
DICOM browser – filter and browser with no pre-processing required



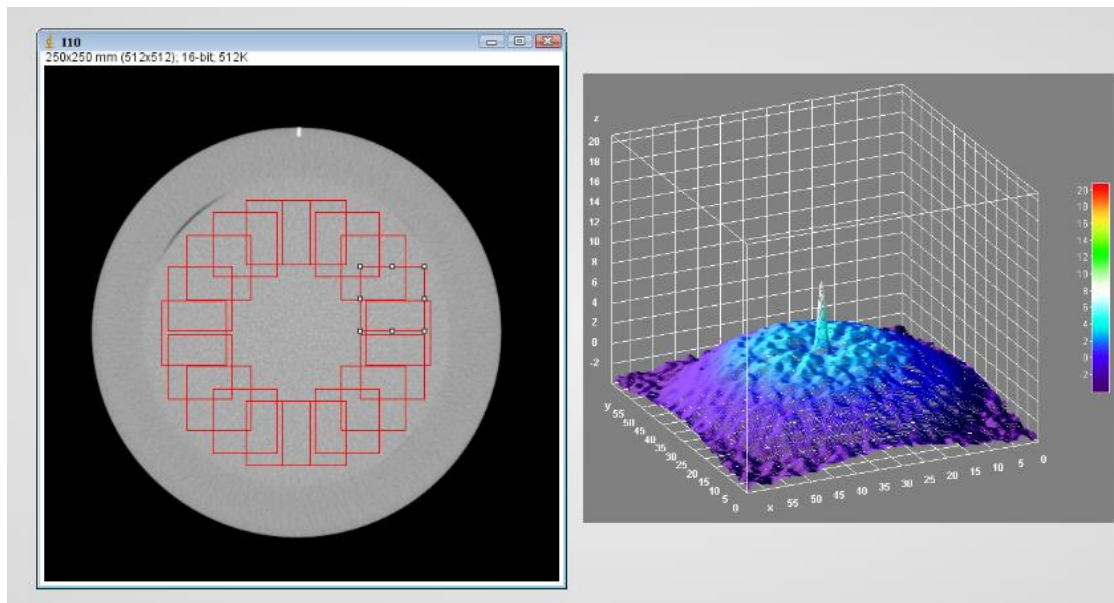
Geometry and alignment checks



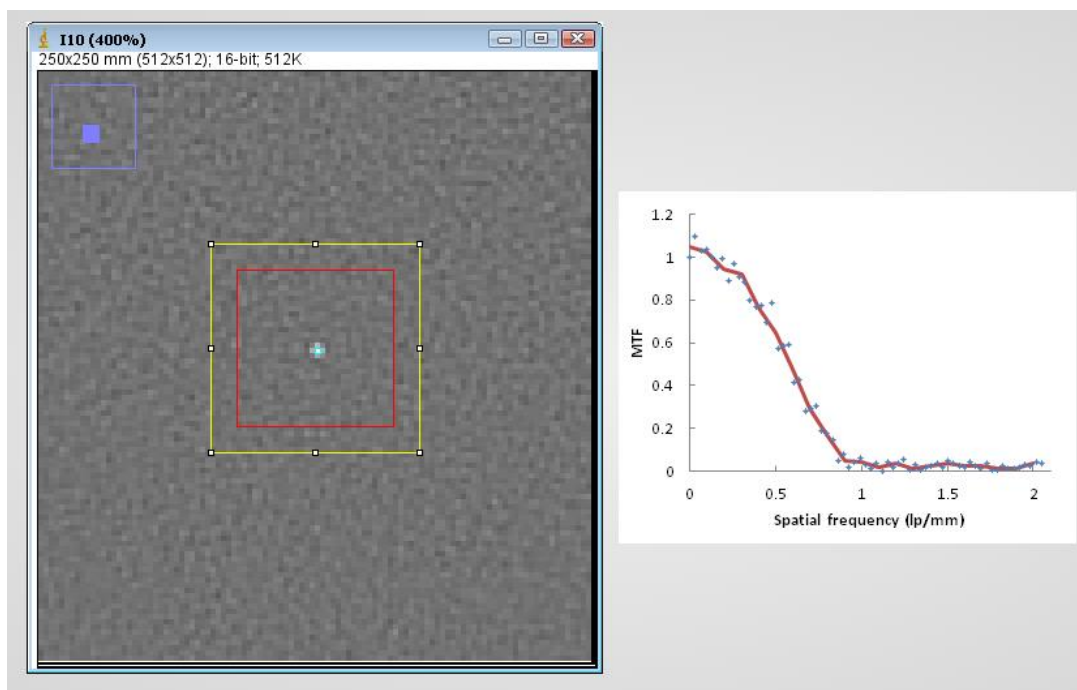
Low contrast module analysis



CT Noise Power Spectrum



CT Modulation Transfer Function



And ...

Gantry angle checks, Irradiated slice thickness measurements, Focus to collimator alignment checks, DICOM stack average, Inter-slice noise, Helical Z-sensitivity profiles and z axis modulation transfer function, Noise Equivalent Quanta, and Custom phantom definitions and analysis.